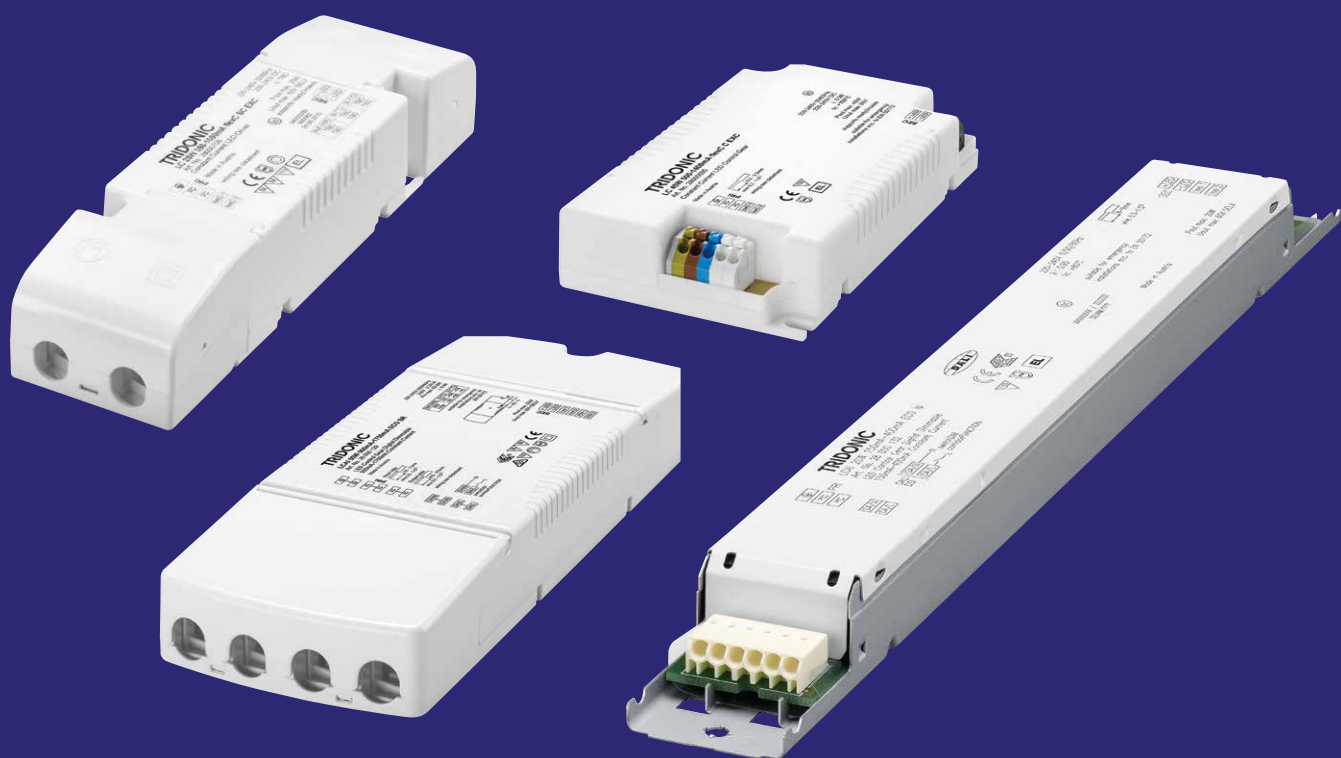


LED Driver

# Driver EXCITE

Flexible configuration



# TRIDONIC

# EXCITE

## Flexible configuration

### Positioning in the Tridonic portfolio

#### ESSENCE

Cost-effective

#### ADVANCED

Simplicity itself

#### EXCITE

Flexible

#### PREMIUM

Convenient

### Overview of casing types

#### Linear Low Profile/Slim



For area luminaires and linear, decorative and free-standing luminaires

#### Built-in



For spotlights, floor-wall luminaires

#### Independent



For downlights, spotlights

#### Stretched Compact



For downlights, spotlights, floor-wall luminaires

### The new LED Driver EXCITE devices feature the programmable ready2mains (220-240 V) interface.

At the same time, the cost-efficient LED Driver provide the benefits of fixed-output devices, including simple installation without additional cabling or DALI addressing.

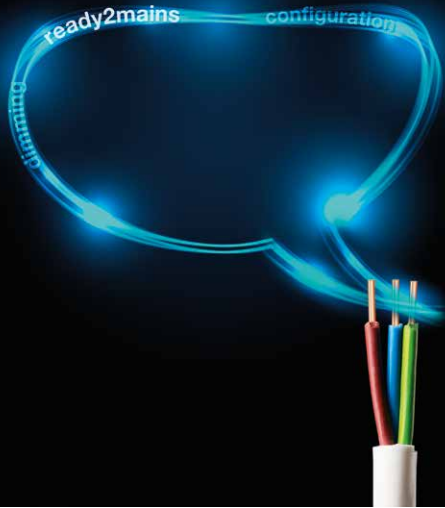
With their excellent dimming performance, the LED Driver EXCITE devices are the professional solution for efficient lighting upgrades and new installations. As before, the luminous flux of a luminaire can be configured via plugs (I Select 2) or now via ready2mains (220-240V), with the added flexibility of being able to set the current in 1mA steps.

### At a glance: Driver EXCITE

- Constant-current LED Driver with application-oriented operating windows
- Output ranges from 10 W to 100 W
- New ready2mains technology: configuration via the mains cable
- High efficiency of up to 95%
- New I-Select 2 interface for setting the current on the primary side
- 5-year guarantee
- Large number of designs including the new Stretched Compact housing with attachable cable clamp

# EXCITE

ready2mains tells the current how to communicate

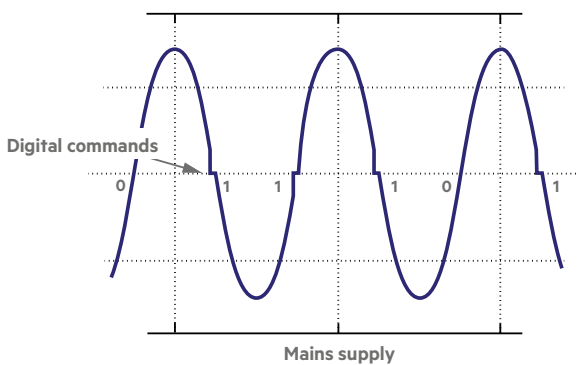


**ready2mains tells the current how to communicate**  
**Simple connection, secure configuration**

**ready2mains uses the mains cable to transmit information:**  
**easily, reliably and professionally.**

Luminaires are controlled directly via the mains, with no need for any additional wiring. Manufacturers can configure their luminaires with ready2mains, saving time and enhancing flexibility. ready2mains reduces production costs and installation costs and also reduces possible sources of error.

ready2main uses phase-cuts to send digital commands via the mains wiring.



**ready2mains**



### Configuration via the mains

The smart way to configure your luminaires

- Easy configuration of LED luminaires – even for fixed-output types
- No need for an additional communication interface as the existing mains interface is used
- Reduces the risk of failure by offering user-defined configuration scripts
- Simple integration in existing test setups



### System solution for configuration

ready2mains programmer + LED Driver

**Driver EXCITE | Built-in**

| Designation                     | Output current (mA) | Output voltage range (V) | Output power (W) | SELV 60 V | Input voltage (V) | Size (mm)       | Order No. |
|---------------------------------|---------------------|--------------------------|------------------|-----------|-------------------|-----------------|-----------|
| LC 10W 150-400mA flexC C EXC    | 150-400             | 15-45                    | 10               | yes       | 220-240           | 105 x 70 x 22,3 | 28000692  |
| LC 17W 250-700mA flexC C EXC    | 250-700             | 15-50                    | 17               | yes       | 220-240           | 105 x 70 x 22,3 | 28000693  |
| LC 25W 350-1050mA flexC C EXC   | 350-1,050           | 20-50                    | 25               | yes       | 220-240           | 105 x 70 x 22,3 | 28000694  |
| LC 45W 500-1400mA flexC C EXC   | 500-1,400           | 20-50                    | 45               | yes       | 220-240           | 120 x 70 x 22,3 | 28000695  |
| LC 60W 900-1750mA flexC C EXC   | 900-1,750           | 20-54                    | 60               | yes       | 220-240           | 125 x 85 x 28,3 | 28000696  |
| LC 100W 1100-2100mA flexC C EXC | 1,100-2,100         | 20-54                    | 100              | yes       | 220-240           | 140 x 100 x 30  | 28001572  |

**Driver EXCITE | Independent**

| Designation                      | Output current (mA) | Output voltage range (V) | Output power (W) | SELV 60 V | Input voltage (V) | Size (mm)      | Order No. |
|----------------------------------|---------------------|--------------------------|------------------|-----------|-------------------|----------------|-----------|
| LC 10W 150-400mA flexC SR EXC    | 150-400             | 15-45                    | 10               | yes       | 220-240           | 200 x 70 x 31  | 28000698  |
| LC 17W 250-700mA flexC SR EXC    | 250-700             | 15-50                    | 17               | yes       | 220-240           | 200 x 70 x 31  | 28000699  |
| LC 25W 350-1050mA flexC SR EXC   | 350-1,050           | 20-50                    | 25               | yes       | 220-240           | 200 x 70 x 31  | 28000700  |
| LC 45W 500-1400mA flexC SR EXC   | 500-1,400           | 20-54                    | 45               | yes       | 220-240           | 215 x 70 x 31  | 28000701  |
| LC 60W 900-1750mA flexC SR EXC   | 900-1,750           | 20-54                    | 60               | yes       | 220-240           | 220 x 85 x 31  | 28000702  |
| LC 100W 1100-2100mA flexC SR EXC | 1,100-2,100         | 20-54                    | 100              | yes       | 220-240           | 235 x 100 x 31 | 28001573  |

**Driver EXCITE | Stretched Compact**

| Designation  | Output current (mA) | Output voltage range (V) | Output power (W) | SELV 60 V | Input voltage (V) | Size (mm)     | Order No. |
|--|---------------------|--------------------------|------------------|-----------|-------------------|---------------|-----------|
| LC 10W 150-400mA flexC SC EXC  | 150-400             | 15-45                    | 10               | yes       | 220-240           | 97 x 43 x 30  | 28000704  |
| LC 17W 250-700mA flexC SC EXC  | 250-700             | 15-50                    | 17               | yes       | 220-240           | 97 x 43 x 30  | 28000705  |
| LC 25W 350-1050mA flexC SC EXC   | 350-1,050           | 20-50                    | 25               | yes       | 220-240           | 97 x 43 x 30  | 28000706  |
| LC 45W 500-1400mA flexC SC EXC   | 500-1,400           | 20-50                    | 45               | yes       | 220-240           | 115 x 43 x 30 | 28000707  |
| ACU SC 43x30mm CLIP-ON SR SET (Optional clip-on strain relief set for Stretched Compact housing) |                     |                          |                  |           |                   | 30 x 43 x 30  | 28001168  |
| ACU SC 15x43x30mm CLIP-ON SR (Optional clip-on strain relief set for Stretched Compact housing)  |                     |                          |                  |           |                   | 15 x 43 x 30  | 28001574  |

**Driver EXCITE | Linear Low Profile**

| Designation                    | Output current (mA) | Output voltage range (V) | Output power (W) | SELV 60 V | Input voltage (V) | Size (mm)     | Order No. |
|--------------------------------|---------------------|--------------------------|------------------|-----------|-------------------|---------------|-----------|
| LC 25W 100-500mA flexC lp EXC  | 100-500             | 20-50                    | 25               | yes       | 220-240           | 280 x 30 x 21 | 28000679  |
| LC 50W 100-400mA flexC lp EXC  | 100-400             | 50-140                   | 50               | no        | 220-240           | 280 x 30 x 21 | 28000680  |
| LC 50W 350-1050mA flexC lp EXC | 350-1,050           | 20-50                    | 50               | yes       | 220-240           | 360 x 30 x 21 | 28000681  |
| LC 75W 100-400mA flexC lp EXC  | 100-400             | 50-220                   | 75               | no        | 220-240           | 280 x 30 x 21 | 28000713  |
| LC 75W 250-550mA flexC lp EXC  | 250-550             | 80-220                   | 75               | no        | 220-240           | 280 x 30 x 21 | 28001808  |
| LC 75W 350-1050mA flexC lp EXC | 350-1,050           | 40-110                   | 75               | no        | 220-240           | 280 x 30 x 21 | 28000683  |
| LC 75W 900-1800mA flexC lp EXC | 900-1,800           | 20-50                    | 75               | yes       | 220-240           | 360 x 30 x 21 | 28000684  |
| LC 100W 250-700mA flexC lp EXC | 250-700             | 80-220                   | 100              | no        | 220-240           | 280 x 30 x 21 | 28000690  |

# EXCITE 1-10 V



## At a glance: Driver EXCITE 1-10V LP

- Built-in constant current LED Driver
- For linear/area lighting in office applications
- Dimmable via 1-10 V Interface
- Adjustable output current between 250 and 550 mA or 250 and 550 mA via ready2mains Programmer or I-select 2 plugs in 1-mA-steps
- Nominal life-time up to 100,000 h
- 5-year guarantee

## Driver EXCITE | 1-10 V Linear Low Profile

| NEW | Designation                    | Output current (mA) | Output voltage range (V) | Output power (W) | SELV 60 V | Input voltage (V) | Size (mm)     | Order No. |
|-----|--------------------------------|---------------------|--------------------------|------------------|-----------|-------------------|---------------|-----------|
|     | LCA 75W 100-400mA 1-10V Ip EXC | 100-400             | 50-220                   | 75               | no        | 220-240           | 280 x 30 x 21 | 28001807  |
|     | LCA 75W 250-550mA 1-10V Ip EXC | 250-550             | 50-220                   | 75               | no        | 220-240           | 280 x 30 x 21 | 28001982  |

# LED Driver

## EXCITE

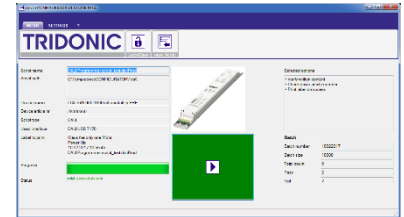
So versatile, so effective

**LED Drivers from Tridonic are suitable for general use and offer impressive functionality.**

The operating current is one of the most important parameters for the efficient application-specific use of an LED module. LED Drivers from Tridonic offer following options for setting this current with a high degree of flexibility:

### deviceCONFIGURATOR

Free deviceCONFIGURATOR software and an appropriate DALI interface support simple integration in any environment. The tool has been designed in such a way that it can be integrated into the production process without great effort. The current can be adjusted in 1 mA increments for individual matching to the required luminous fluxes.



### ready2mains programmer

Simple configuration, without any additional digital interface in the LED Driver. The ready2mains programmer communicates via the mains and therefore provides a simple means of configuring all LED Drivers with the ready2mains interface – including Driver EXCITE. The programmer is easy to operate and extremely versatile. It can be operated manually or with predefined scripts, alternatively it can be integrated in automated processes.

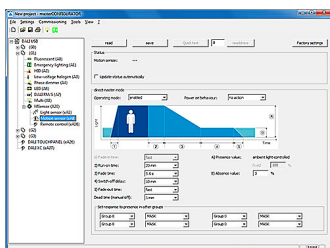
### I-SELECT 2 interface

Perfect for manual configuration of a small number of devices. Resistance plugs defined with the required values are simply inserted in the appropriate terminals on Drivers EXCITE and PREMIUM. Tridonic offers plugs for the most common current values. The I-SELECT 2 interface also enables specific intermediate values to be used.



### one4all interface

LED lighting with DALI, DSI, switchDIM or corridorFUNCTION: The digital one4all interface ensures proper operation and integration in various lighting control systems.



In addition, all the parameters of driver PREMIUM can be configured for maximum effect. The current can be adjusted in 1 mA increments for individual matching to the required luminous fluxes.

- **DALI** (Digital Addressable Lighting Interface) is an interface protocol for digital communication between electronic lighting equipment.
- **DSI** (Digital Serial Interface) enables DSI ECGs to be controlled. The luminaires are switched via the control line irrespective of the cabling for the power supply.
- **switchDIM** works with the mains voltage as a control signal and make it possible to dim the driver via a standard Taster.
- The **corridorFUNCTION** performs complex processes with ease. Standard motion detectors and luminaires with one4all LED drivers is all that is required to provide presence-controlled lighting. The corridorFUNCTION can be programmed so that if there is no one in the room the light is not switched off – as is the case with non-dimmable ballasts – but dimmed to the minimum level. It can then be switched off automatically after a preset delay.

# Prepared for the Future

## Our Activities and Locations



**1,700**

Around 1,700 employees throughout the world are committed to helping you with their know-how and creativity to create the perfect light.

**7**

There are seven research and development centres in which new LEDs and networked lighting technologies are being developed.

**3**

There are three things you can rely on atTridonic: optimum product quality, decades of expertise and our committed and flexible support.

**27**

With 27 branch offices on five continents we are there for you wherever you are in the world.

**2,700**

That's how many patents and inventions testify to Tridonic's extraordinary powers of innovation.

### Details

For further information, data sheets, product catalogues and ordering details, please go to [www.tridonic.com](http://www.tridonic.com)

# Support and advice

## From a single source



TALEXengine DLE



TALEXengine DLE Integrated



TALEXengine CLE



TALEXengine CLE Integrated



TALEXengine SLE



TALEXengine FLE



TALEXengine LLE



TALEXengine QLE

We will help you to create lighting solutions that are unbeatable in terms of economy and functionality, according to the slogan:  
We devote all our energy to your light.

As an international company, Tridonic is represented worldwide by 30 branch offices and partners in 73 countries.



#### Headquarters

Tridonic GmbH & Co KG  
Färbergasse 15 | 6851 Dornbirn, Austria  
T +43 5572 395-0 | F +43 5572 20176  
[www.tridonic.com](http://www.tridonic.com) | [sales@tridonic.com](mailto:sales@tridonic.com)

Light you want to follow.

