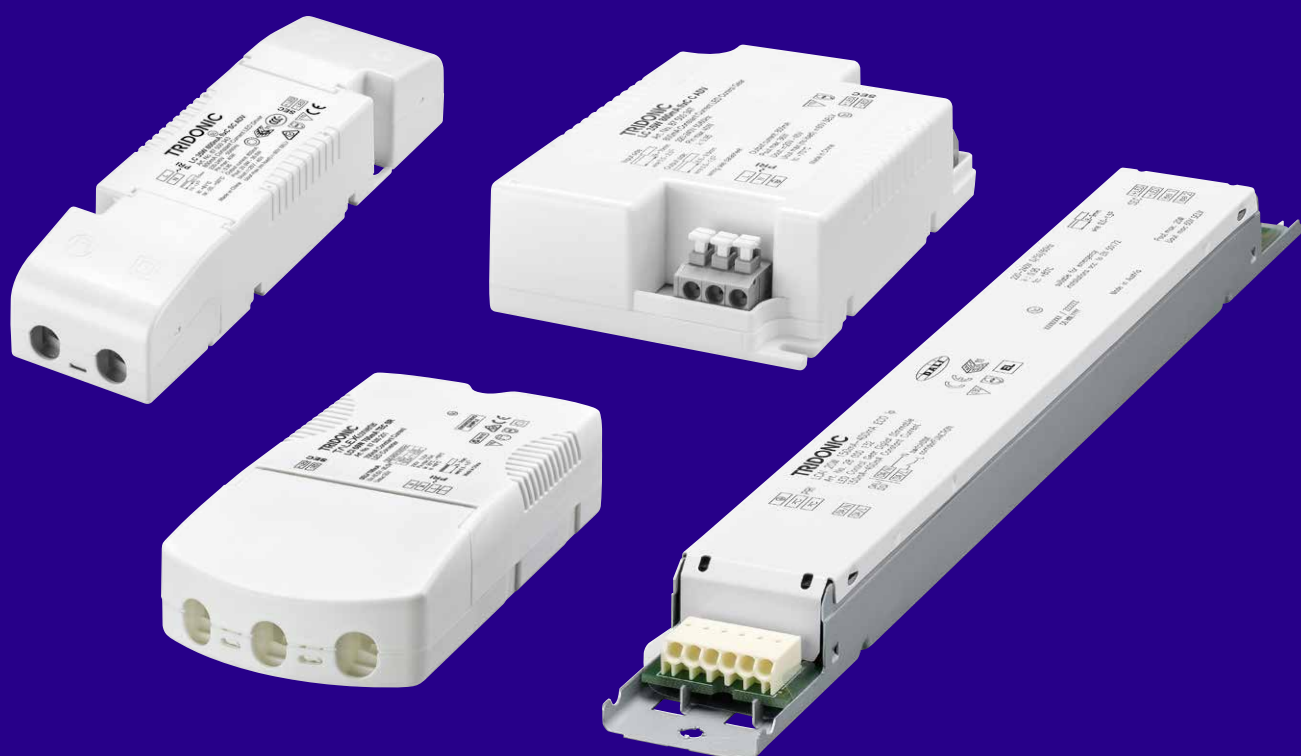


LED Driver

# Driver ADVANCED

Reliable and straightforward



# TRIDONIC

# ADVANCED

## Reliable and straightforward

### Positioning in the Tridonic portfolio

#### ESSENCE

Cost-effective

#### ADVANCED

Simplicity itself

#### EXCITE

Flexible

#### PREMIUM

Convenient

### Overview of casing types

#### Linear Low Profile/Slim



For area luminaires and linear, decorative and free-standing luminaires.

#### Built-in



For spotlights, floor-wall luminaires

#### Independent



For downlights, spotlights

#### Stretched Compact



For downlights, spotlights, floor-wall luminaires

**The LED Driver ADVANCED series offers the best compromise between attractive price and professional performance. While focusing on the core functionalities, the driver ADVANCED series offers superior quality and performance ensuring a reliable operation of your LED module.**

While the LED Driver ADVANCED supports most common LED modules, the series fits perfectly to the LED module SLE series as well as QLE and LLE, guaranteeing an optimal performance and lifetime of your Tridonic LED light engine.

### At a glance: Driver ADVANCED

- Constant current and fixed or flexC output built-in LED Driver
- Output current (250–2,450 mA)
- Max. output power (10–150 W)
- Nominal lifetime up to 50,000 h
- Linear Low Profile (lp) and Strain-relief (Independent SR) version provide the flexibility of current setting (Five-Step) and indoor SELV & non-SELV installations
- Linear Low Profile (38, 53, 69, 71W) Version DC operation suitable for emergency lighting using in central battery systems per EN 50172
- For luminaires of protection class I and protection class II
- Temperature protection as per EN 61347-2-13 C5e
- Overtemperature-, Overload-, Short-circuit- and No-load protection
- 5-year guarantee

# ADVANCED

## Driver ADVANCED | Stretched Compact

Designation	Output current (mA)	Output power (W)	Output voltage range (V)	Input voltage (V)	Efficiency (%)	Size (mm)	Order No.
LC 15W 350mA fixC SC ADV	350	15	21.4-44	220-240	83	97 x 43 x 22.5	87500448
LC 20W 500mA fixC SC ADV	500	20	21.4-44	220-240	83	97 x 43 x 22.5	87500449
ACU SC 43x22.5mm CLIP-ON SR SET (Optional clip-on strain relief set for Stretched Compact housing)						30 x 43 x 22.5	28001534
LC 25W 600mA fixC SC ADV	600	25	21.4-44	220-240	88	97 x 43 x 30	87500341
LC 30W 700mA fixC SC ADV	700	30	21.4-44	220-240	88	97 x 43 x 30	87500342
LC 35W 700mA fixC SC ADV	700	35	25-50	220-240	88	97 x 43 x 30	87500450
LC 35W 800mA fixC SC ADV	800	35	25-45	220-240	89	97 x 43 x 30	87500343
LC 40W 900mA fixC SC ADV	900	40	25-45	220-240	89	97 x 43 x 30	87500344
LC 47W 1050mA fixC SC ADV	1,050	47	25-45	220-240	89	130 x 43 x 30	87500451
LC 60W 1050mA fixC SC ADV	1,050	47	31-57	220-240	89	150 x 43 x 30	87500452
ACU SC 43x30mm CLIP-ON SR SET (Optional clip-on strain relief set for Stretched Compact housing)						30 x 43 x 30	28001168
ACU SC 15x43x30mm CLIP-ON SR (Optional clip-on strain relief set for Stretched Compact housing)						15 x 43 x 30	28001574

Further details can be found in datasheet.

Designation	Output current (mA)	Output power (W)	Output voltage range (V)	Input voltage (V)	Efficiency (%)	Size (mm)	Order No.
LC 25W 350-600mA flexC SC ADV	350-600	25	27-44	220-240	88	97 x 43 x 30	87500677
LC 35W 500-800mA flexC SC ADV	500-800	35	25-44	220-240	88	97 x 43 x 30	87500678
LC 40W 800-1050mA flexC SC ADV	800-1,050	40	25-42	220-240	88	97 x 43 x 30	87500679
LC 50W 900-1200mA flexC SC ADV	900-1,200	50	27-44	220-240	90	115 x 43 x 30	87500680
LC 60W 1000-1400mA flexC SC ADV	1,000-1,400	60	27-44	220-240	90	130 x 43 x 30	87500681
ACU SC 43x30mm CLIP-ON SR SET (Optional clip-on strain relief set for Stretched Compact housing)						30 x 43 x 30	28001168
ACU SC 15x43x30mm CLIP-ON SR (Optional clip-on strain relief set for Stretched Compact housing)						15 x 43 x 30	28001574

Further details can be found in datasheet.

## Driver ADVANCED | Independent

Designation	Output current (mA)	Output power (W)	Output voltage range (V)	Input voltage (V <sub>ac</sub> )	Efficiency (%)	Size (mm)	Order No.
<b>SELV</b>							
LC 20W 350/500/700mA flexC SR ADV	350; 500; 700	20	25-50	220-240	85	101.5 x 51 x 29.5	87500621
LC 35W 350/500mA flexC SR ADV	350; 500	35	35-100	220-240	88	159.4 x 82 x 34	87500622
LC 35W 700/800/1050mA flexC SR ADV	700; 800; 1,050	35	25-50	220-240	87.5	159.4 x 82 x 34	87500623
LC 42W 700/900/1050mA flexC SR ADV	700; 900; 1,050	42	30-60	220-240	88.5	159.4 x 82 x 34	87500624
LC 60W 1050/1200/1400mA flexC SR ADV	1,050; 1,200; 1,400	60	21.5-54	220-240	90.5	159.4 x 82 x 34	87500625

Further details can be found in datasheet.

**ADVANCED****Driver ADVANCED | Built-in**

Designation	Output current (mA)	Output power (W)	Output voltage range (V)	Input voltage (V)	Efficiency (%)	Size (mm)	Order No.
LC 25W 600mA fixC C ADV	600	25	21.4–44	220–240	88	103 x 67 x 29.7	87500345
LC 30W 700mA fixC C ADV	700	30	21.4–44	220–240	88	103 x 67 x 29.7	87500346
LC 35W 800mA fixC C ADV	800	35	25–45	220–240	89	103 x 67 x 29.7	87500347
LC 40W 900mA fixC C ADV	900	40	25–45	220–240	89	103 x 67 x 29.7	87500348

Further details can be found in datasheet.

**Driver ADVANCED LCI TEC | Built-in**

Designation	Output current (mA)	Output power (W)	Output voltage range (V)	Input voltage (V)	Efficiency (%)	Size (mm)	Order No.
LCI 20W 700mA TEC C	700	20	13–29	220–240	85	93 x 58 x 26.2	87500190
LCI 35W 350mA TEC C	350	35	50–100	220–240	90	103 x 67 x 29.7	87500192
LCI 35W 500mA TEC C	500	35	35–70	220–240	90	103 x 67 x 29.7	87500194
LCI 35W 1050mA TEC C	1,050	35	16.5–33.5	220–240	88	103 x 67 x 29.7	87500198
LCI 42W 1050mA TEC C	1,050	42	20–40	220–240	90	103 x 67 x 29.7	87500247 *(04/18)
LCI 60W 700mA TEC C	700	60	46.5–85.5	220–240	91.5	123 x 75 x 29.7	87500200
LCI 60W 1050mA TEC C	1,050	60	31–57	220–240	90.5	123 x 75 x 29.7	87500202 *(04/18)
LCI 65W 1400mA TEC C	1,400	65	23–46.5	220–240	90	123 x 75 x 29.7	87500204
LCI 65W 1750mA TEC C	1,750	65	18.5–37	220–240	90	123 x 75 x 29.7	87500206

Further details can be found in datasheet.

\* Last Order

**Driver ADVANCED | Built-in robust**

Designation	Output current (mA)	Output power (W)	Output voltage range (V)	Input voltage (V)	Efficiency (%)	Size (mm)	Order No.
LCI 100W 1400mA TEC C	1,400	100	35.5–71.5	220–240	94	140 x 100 x 28.3	87500267
LCI 100W 1750mA TEC C	1,750	100	28.5–58	220–240	93.5	140 x 100 x 28.3	87500268
LCI 100W 2100mA TEC C	2,100	100	23.5–47.5	220–240	93.5	140 x 100 x 28.3	87500269
LCI 150W 1750mA TEC C	1,750	150	43–86	220–240	94.5	140 x 100 x 28.3	87500270
LCI 150W 2100mA TEC C	2,100	150	35.5–71.5	220–240	94	140 x 100 x 28.3	87500271
LCI 150W 2450mA TEC C	2,450	150	30.5–61	220–240	93.5	140 x 100 x 28.3	87500272

Further details can be found in datasheet.

## Driver ADVANCED | Linear Low Profile

Designation	Output current (mA)	Output power (W)	Output voltage range (V)	Input voltage (V <sub>dc</sub> )	Efficiency (%)	Size (mm)	Order No.
<b>SELV</b>							
LC 19W 250-350mA flexC Ip ADV	250; 275; 300; 325; 350	19	25-54	220-240	84	230 x 30 x 21	87500585
LC 38W 500-700mA flexC Ip ADV	500; 550; 600; 650; 700	38	25-54	220-240	85	280 x 30 x 21	87500498
LC 57W 800-1050mA flexC Ip ADV	800; 850; 900; 950; 1,050	57	25-54	220-240	86	280 x 30 x 21	87500500
LC 81W 1200-1750mA flexC Ip ADV	1,200; 1,300; 1,400; 1,550; 1,750	81	25-54	220-240	87	360 x 30 x 21	87500502
<b>Non-SELV</b>							
LC 38W 250-350mA flexC Ip ADV	250; 275; 300; 325; 350	38	51-109	220-240	89	280 x 30 x 21	87500496
LC 38W 350-500mA flexC Ip ADV	350; 375; 400; 450; 500	38	35-75	220-240	88	280 x 30 x 21	87500497
LC 53W 250-350mA flexC Ip ADV	250; 275; 300; 325; 350	53	70-150	220-240	90	280 x 30 x 21	87500499
LC 69W 350-500mA flexC Ip ADV	350; 375; 400; 450; 500	69	60-138	220-240	91	280 x 30 x 21	87500599
LC 71W 250-350mA flexC Ip ADV	250; 275; 300; 325; 350	71	93-217*	220-240	93	280 x 30 x 21	87500501
LC 112W 250-350mA flexC Ip ADV	250; 275; 300; 325; 350	112	143-320	220-240	94	360 x 30 x 21	87500619
LC 165W 400-700mA flexC Ip ADV	400; 450; 500; 600; 700	165	143-320	220-240	94	360 x 30 x 21	87500620

Further details can be found in datasheet. \*For 350mA, the max voltage is 204 V

Designation	Output current (mA)	Output power (W)	Output voltage range (V)	Input voltage (V <sub>dc</sub> )	SELV	Efficiency (%)	Size (mm)	Order No.
LC 35W 250mA fixC Ip ADV	250	35	47-140	220-240	no	90	280 x 30 x 21	87500453
LC 35W 300mA fixC Ip ADV	300	35	47-117	220-240	no	89	280 x 30 x 21	87500454
LC 35W 350mA fixC Ip ADV	350	35	45-100	220-240	no	89	280 x 30 x 21	87500455
LC 65W 250mA fixC Ip ADV	250	65	112-250	220-240	no	93	280 x 30 x 21	87500456
LC 65W 300mA fixC Ip ADV	300	65	97-217	220-240	no	92	280 x 30 x 21	87500457
LC 65W 350mA fixC Ip ADV	350	65	83-186	220-240	no	92	280 x 30 x 21	87500458

Further details can be found in datasheet.

ADVANCED LCI TEC  
Linear Low Profile



## At a glance: ADVANCED LCI TEC | Linear Low Profile

- Improved output current tolerance +/- 5%
- Low output current ripple +/- 15%
- Perfect fit for tmodules LLE G3 and ESSENCE

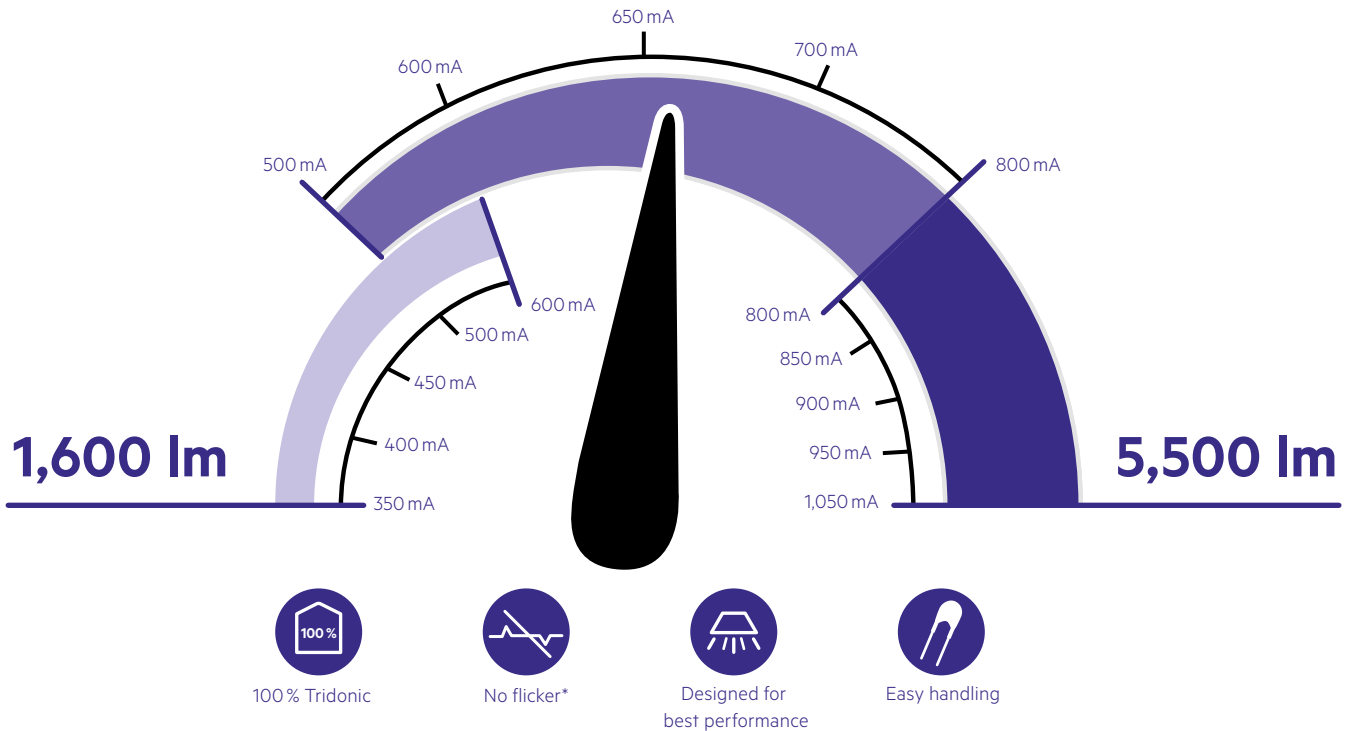
## Driver ADVANCED LCI TEC | Linear Low Profile

Designation	Output current (mA)	Output power (W)	Output voltage range (V)	Input voltage (V <sub>dc</sub> )	Efficiency (%)	Size (mm)	Order No.
LCI 10W 350mA TEC Ip	350	10	13-29	220-240	83	145 x 22 x 21	87500219
LCI 20W 350mA TEC Ip	350	20	26-57	220-240	88	230 x 30 x 21	87500220
LCI 20W 500mA TEC Ip	500	20	18-40	220-240	88	230 x 30 x 21	87500221
LCI 20W 700mA TEC Ip	700	20	13-29	220-240	86	230 x 30 x 21	87500222
LCI 35W 350mA TEC Ip	350	35	50-100	220-240	90	280 x 30 x 21	87500223
LCI 35W 500mA TEC Ip	500	35	35-70	220-240	90	280 x 30 x 21	87500224
LCI 35W 700mA TEC Ip	700	35	25-50	220-240	88.5	280 x 30 x 21	87500225
LCI 35W 1050mA TEC Ip	1,050	35	16.5-33.5	220-240	87.5	280 x 30 x 21	87500226
LCI 60W 700mA TEC Ip	700	60	46.5-85.5	220-240	91.5	360 x 30 x 21	87500227
LCI 60W 1050mA TEC Ip	1,050	60	31-57	220-240	90.5	360 x 30 x 21	87500228
LCI 65W 1400mA TEC Ip	1,400	65	23-46.5	220-240	90	360 x 30 x 21	87500229
LCI 65W 1750mA TEC Ip	1,750	65	18.5-37	220-240	89.5	360 x 30 x 21	87500230

Further details can be found in datasheet.

# Bundling brings movement into your spotlight design

## Fewer components, more variety



**Spotlights can now be manufactured even more efficiently:**  
**Three drivers are sufficient to cover the entire lumen bandwidth of an LED module. The result is maximum flexibility with regard to product design, which goes hand in hand with low storage costs.**

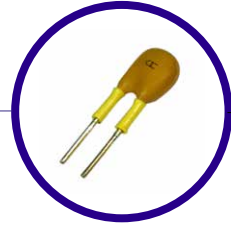
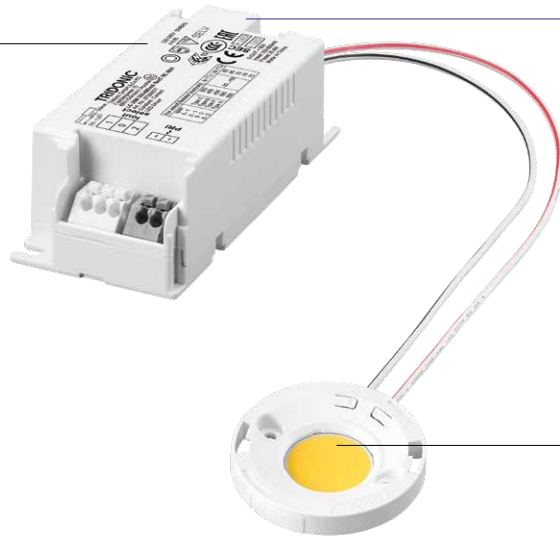
### Financial advantages

- Only one LES19 LED module for all common lumen packages for a luminaire
- Easy output current selection by plug, making it possible to use different amounts of luminous flux with one driver
- 100% Tridonic solution for optimum service and warranty

### Technical advantages

- Stretched Compact housing just 97 mm in length for the further miniaturisation of spotlights and downlights, with optional strain relief
- \*Low ripple current (+/-5 %) for flicker-free luminaires
- Forward voltage that is perfectly attuned for efficient operation of the SLE modules
- Safe electrical connection due to strain relief (optional)

Driver flexC SC ADVANCED  
 25 W 350-600 mA  
 35 W 500-800 mA  
 40 W 800-1,050 mA



ADV Plug



Module

- SLE G6 10 mm 1,200 lm 830 ADV
- SLE G6 15 mm 3,000 lm 830 ADV
- SLE G6 17 mm 4,000 lm 830 ADV
- SLE G6 19 mm 5,000 lm 830 ADV
- SLE G6 23 mm 6,000 lm 830 ADV

**Overview of available luminous flux**

**Bundling: LC flexC ADVANCED driver & SLE G6 830 ADV module**

Driver	Module	Luminous flux			
		2,000 lm	3,000 lm	4,000 lm	5,000 lm
<b>LC flexC SC ADV 25W</b> 350 mA 400 mA 450 mA 500 mA 600 mA	<b>SLE G6</b> 10 mm	[Bar chart showing luminous flux range]			
	<b>SLE G6</b> 15 mm	[Bar chart showing luminous flux range]			
	<b>SLE G6</b> 17 mm	[Bar chart showing luminous flux range]			
	<b>SLE G6</b> 19 mm	[Bar chart showing luminous flux range]			
	<b>SLE G6</b> 23 mm	[Bar chart showing luminous flux range]			
<b>LC flexC SC ADV 35W</b> 500 mA 600 mA 650 mA 700 mA 800 mA	<b>SLE G6</b> 10 mm	[Bar chart showing luminous flux range]			
	<b>SLE G6</b> 15 mm	[Bar chart showing luminous flux range]			
	<b>SLE G6</b> 17 mm	[Bar chart showing luminous flux range]			
	<b>SLE G6</b> 19 mm	[Bar chart showing luminous flux range]			
	<b>SLE G6</b> 23 mm	[Bar chart showing luminous flux range]			
<b>LC flexC SC ADV 40W</b> 800 mA 850 mA 900 mA 950 mA 1,500 mA	<b>SLE G6</b> 15 mm	[Bar chart showing luminous flux range]			
	<b>SLE G6</b> 17 mm	[Bar chart showing luminous flux range]			
	<b>SLE G6</b> 19 mm	[Bar chart showing luminous flux range]			
	<b>SLE G6</b> 23 mm	[Bar chart showing luminous flux range]			



**Tridonic Setbuilder**  
 Additional driver / module combinations can be found quickly and easily using the Web Tool from Tridonic.

# Support and advice

## From a single source



Engine DLE



Engine CLE



Engine CLE Integrated



Engine LLE-FLEX



Engine SLE



Engine EM ready2apply



Engine LLE



Engine QLE

We will help you to create lighting solutions that are unbeatable in terms of economy and functionality, according to the slogan:  
We devote all our energy to your light.

As an international company, Tridonic is represented worldwide by 30 branch offices and partners in 73 countries.



#### Headquarters

Tridonic GmbH & Co KG  
Färbergasse 15 | 6851 Dornbirn, Austria  
T +43 5572 395-0 | F +43 5572 20176  
[www.tridonic.com](http://www.tridonic.com) | [sales@tridonic.com](mailto:sales@tridonic.com)

Light you want to follow.

